



The Peggy F. Murphy  
**Community Grief Center**  
*For those who go on living*  
A service of Visiting Nurse

# Grief Support Group

For any loss due to death

---

Awareness that grief may affect every aspect of our life is the beginning of our healing process. This group is designed to provide any adult who has suffered the death of a loved one an opportunity to explore, learn, and feel supported in a safe environment.

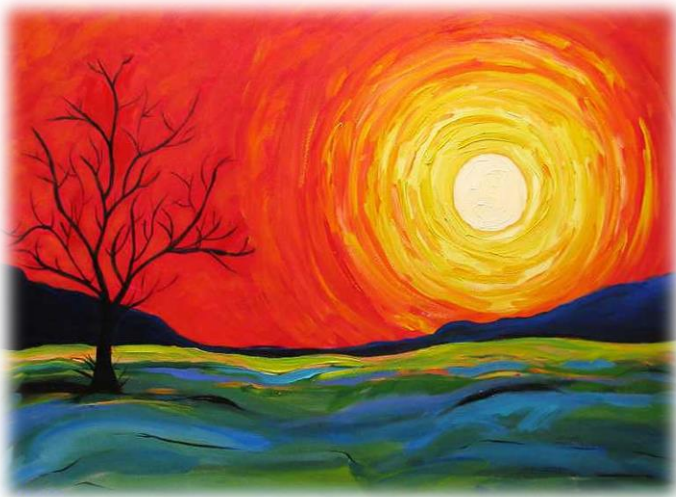
---

When: The **1<sup>st</sup> Monday** of each month (**Beginning May 1<sup>st</sup>, 2017**)

Time: **6:00 pm – 7:30 pm**

Where: **Westwood Fellowship in Fellowship Hall**

4100 Becker Road  
Woodburn, Indiana 46797



For questions or information regarding this group or any of the grief support services offered through Visiting Nurse, please contact (260) 435-3261.